

**Canterbury
Valuing People
Event for
people with
learning
disabilities**

Today's topic is your Health matters

Learn about;

Diabetes what is it?

What signs to look out for

- Take away information**
- Listen and be listened to**
- Share your news and ideas**

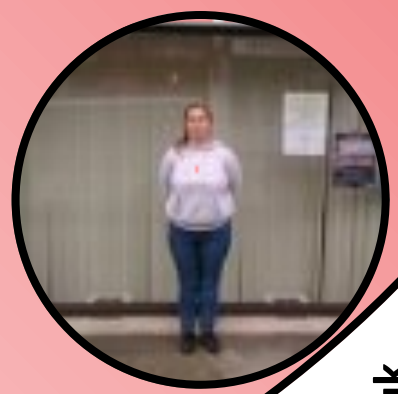
WHERE:

Active lives
Corner of
Cumberland &
Sussex ave CT1 1SL
Canterbury



WHEN:

29th of
November
10:00—10:30
Cuppa
10:30—12:30



**Your
views
could help shape
services
in Kent for people
with learning
disabilities**



Drinks

Contact your Valuing
People Project
Support Michelle
07577-681-783



michelle.hosken@eastkentmencap.co.uk

www.kentldpb.org.uk