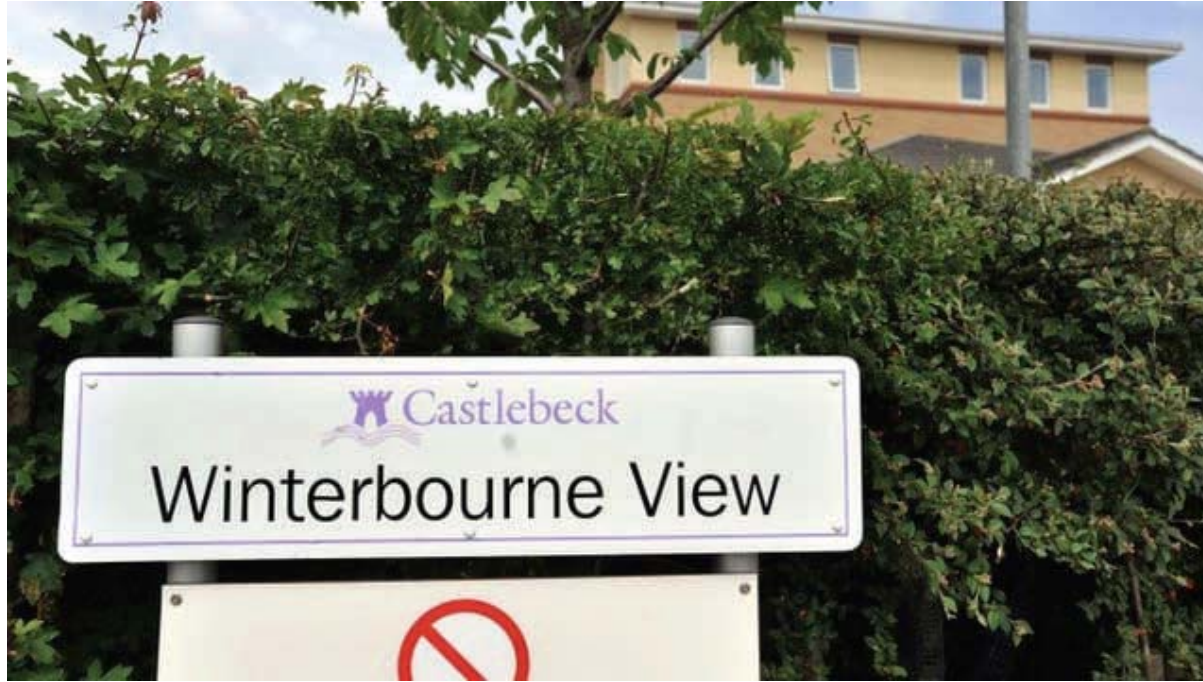


Kent Learning Disability Partnership Board

Transforming Care Update

14th July 2015





**Winterbourne
Programme**



**Transforming
Care**

Key Actions for CCGs and KCC



Each CCG to establish a register of all hospital placements



Discharge all “inappropriately placed” patients to community placements

Registers

CCG	Thanet	SKC	Cant and Coast	Ashford	Swale	DGS	West Kent	Totals
CCG Placement	4	5	4	4	2	4	2	25
NHSE Placement	7	2	10	0	6	6	10	41
Total	11	7	14	4	8	10	14	66
CCG for discharge	2	2	2	3	2	4	1	16
NHSE for discharge	2	1	0	0	2	3	3	11
Totals	4	3	2	3	4	7	4	27

Important Numbers

28



**Already moved to
new homes in the
community**

67



**Still in specialist
hospitals**

27



**inappropriately
placed and are on
the “Discharge List”**

Key Actions for CCGs and KCC



Produce a Joint Plan to improve community services for children and adults with Learning Disability or Autism.

Joint Strategic Plan



Awaiting final amendments from the CCGs before going to stakeholders for approval.

Projects for 2015/16



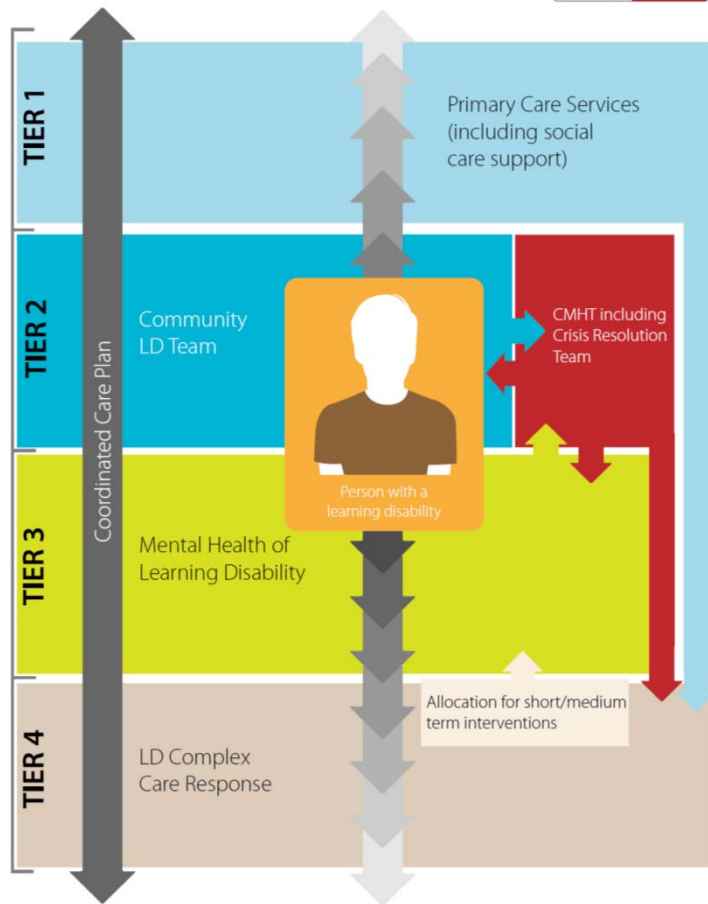
Safe Accommodation



Delayed Discharge
Project

Projects for 2015/16

Integrated Learning
Disability Care Pathway



Care Pathway Review

Projects for 2015/16



Joint Performance Framework



Ongoing data submissions to HSCIC and NHSE

