



# Health and Public Health system

**VALUING PEOPLE NOW CABINET**

**26<sup>th</sup> APRIL 2013**

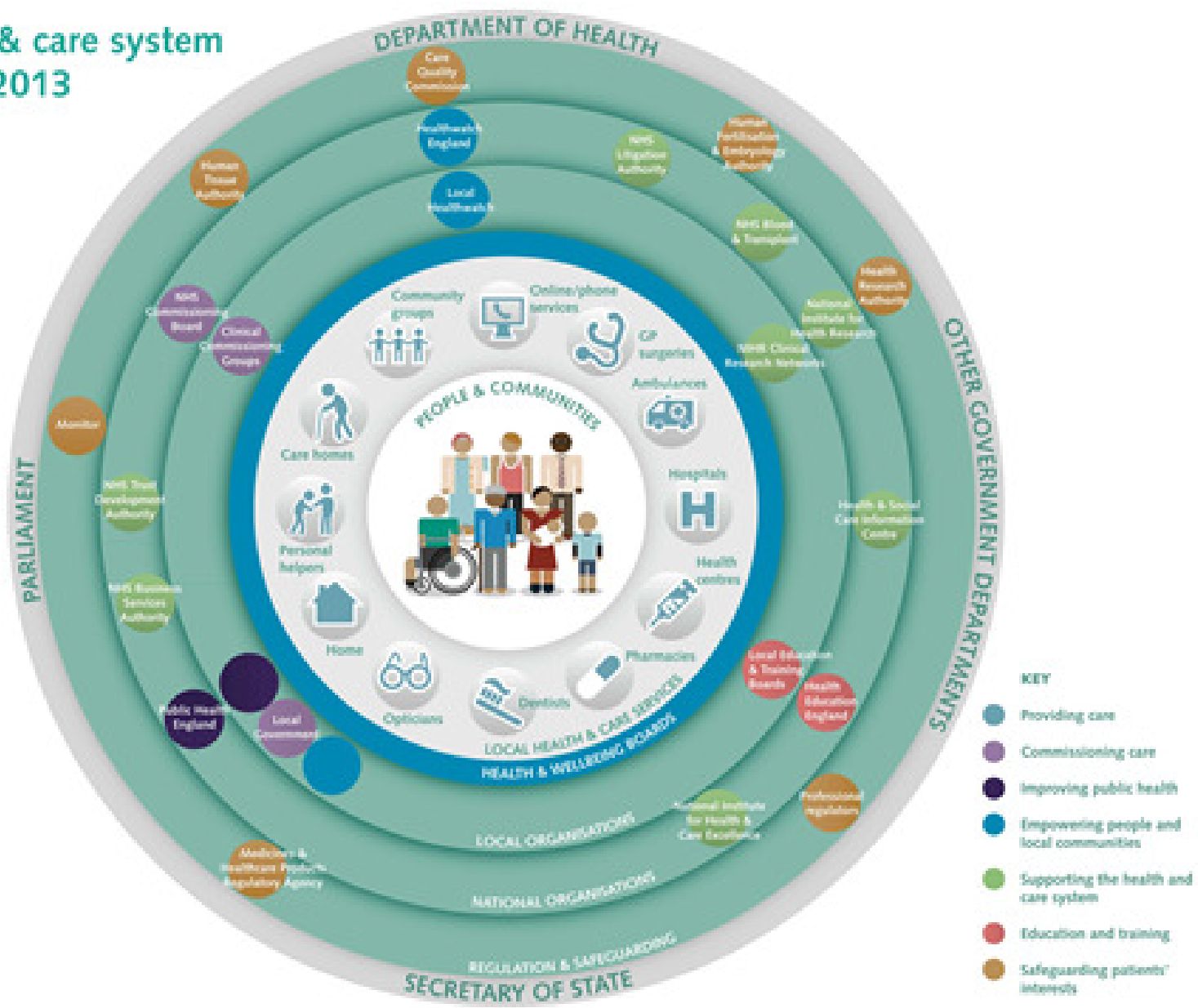
**Summary of the presentation shown by**

**Malti Varshney**

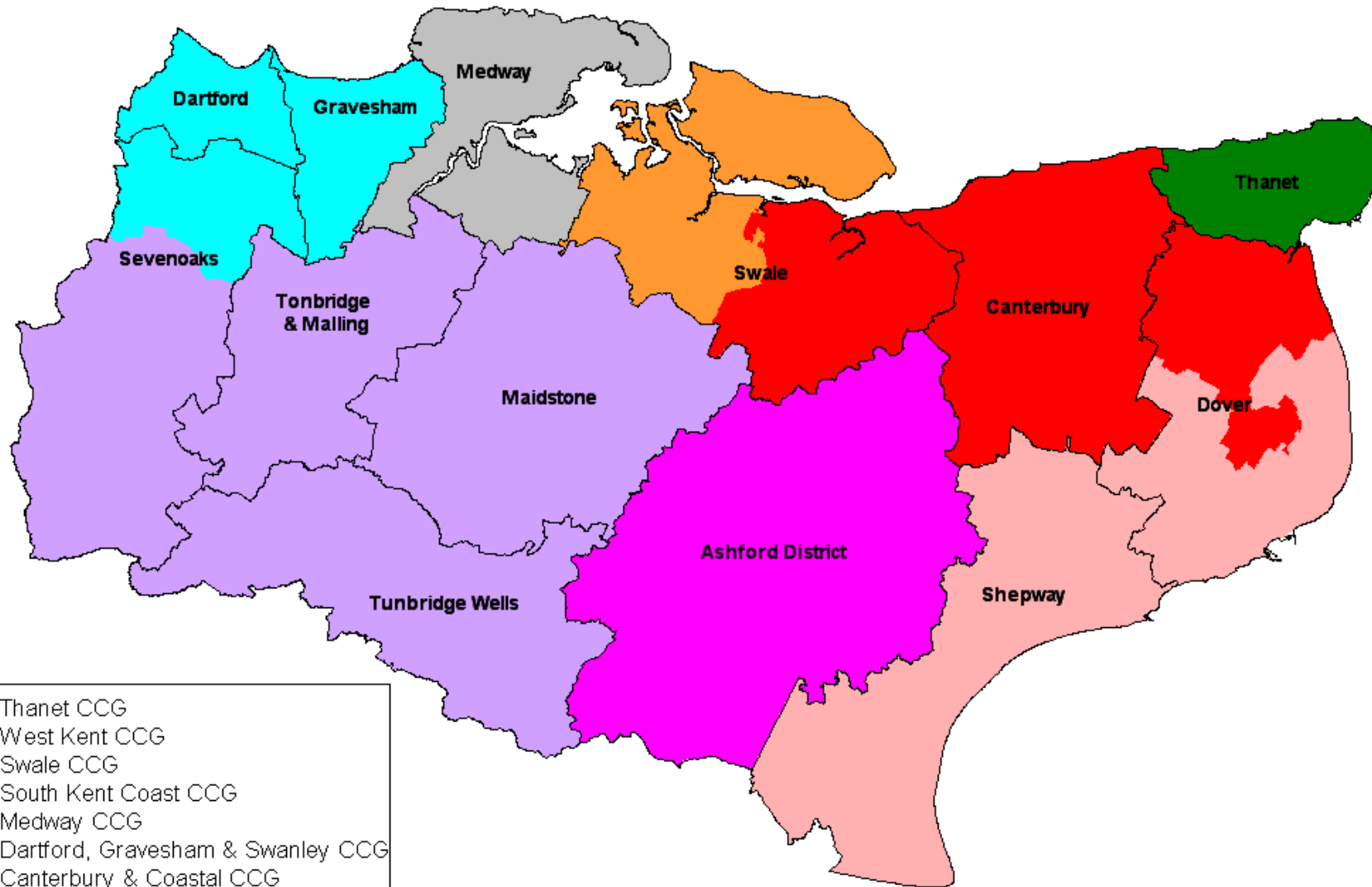
**Consultant in Public Health**

**on 24<sup>th</sup> April 2013 at the Kent LD Partnership Board**

# The health & care system from April 2013



# Clinical Commissioning Groups and District boundaries - January 2013



Produced by: Kent & Medway Public Health Observatory - (DH, 13/02/2013)  
Source: NHS South of England, ONS

# Primary Care

- Commissioned by NHS Commissioning Board
- Clinical Commissioning Groups will support quality improvement
- Provide information for Self Assessment Indicators
- No change as user of the service

# Acute Care

- Clinical Commissioning Groups will need to ensure effective commissioning of acute services.
- Self Assessment Framework
- No change for the service user

## Specialist Learning Disability service

- Clinical Commissioning Groups in partnership with Local Authorities will commission this
- No change for the service user

## Wider health and wellbeing and public health

- NHS commissioning Board will commission screening and immunisation services.
- Local Authorities will commission health improvement
- No change for the service user