

# Transforming Care Update

---

## Kent Valuing People Now Cabinet

20 June 2016

**Jimmy Kerrigan**

Project Manager Kent Transforming Care Programme  
Kent NHS/Kent County Council

**Troy Jones**

Commissioning Officer Kent County Council



# Registers

CCG	Thanet	SKC	Cant and Coast	Ashford	Swale	DGS	West Kent	Totals
CCG Placement	6	6	4	2	1	3	2	24
NHSE Placement	5	0	10	0	8	9	14	46
<b>Total</b>	<b>11</b>	<b>6</b>	<b>14</b>	<b>2</b>	<b>9</b>	<b>12</b>	<b>16</b>	<b>70</b>
<b>CCG for discharge</b>	<b>1</b>	<b>5</b>	<b>2</b>	<b>2</b>	<b>1</b>	<b>2</b>	<b>2</b>	<b>15</b>
<b>NHSE for discharge</b>	<b>2</b>	<b>0</b>	<b>0</b>	<b>0</b>	<b>0</b>	<b>2</b>	<b>2</b>	<b>6</b>
<b>Totals</b>	<b>3</b>	<b>5</b>	<b>2</b>	<b>2</b>	<b>1</b>	<b>4</b>	<b>3</b>	<b>21</b>

## Important Numbers

**34**



**Already moved to  
new homes in the  
community**

**70**



**Still in specialist  
hospitals**

**21**



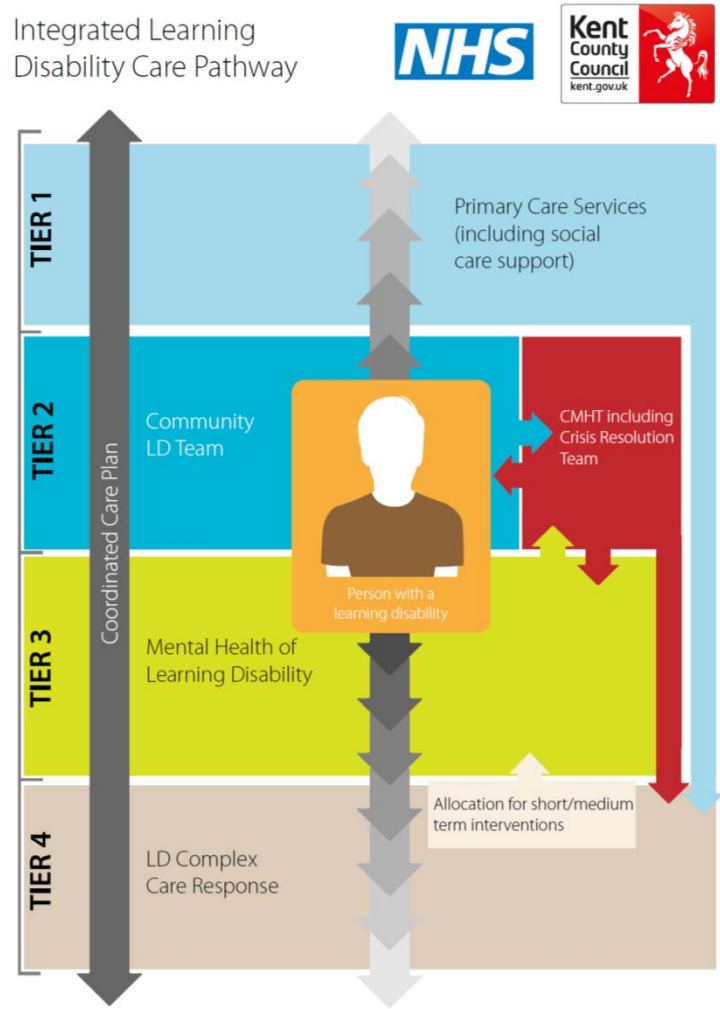
**Inappropriately placed  
and are on the  
“Discharge List”**

# The Plan



A joint Kent and Medway Plan has been submitted to NHS England but hasn't yet been approved.

# What's in The Plan?



## The Integrated Learning Disability Care Pathway

# What's in The Plan?



Safe  
Accommodation

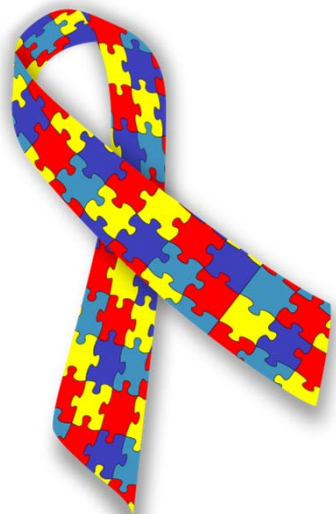


Forensic  
Outreach  
Service

# What's in The Plan?



ChYP – Children and  
Young People Health  
and Wellbeing



Adult  
Neurodevelopmental  
Pathway

# Money



## NHS Capital Bids

### Investment Fund

- Forensic Outreach
- KCC Autism Support Service
- CCG Autism Diagnostic Support Service



# Involvement



Consulting on  
how to engage  
people in the  
plan and  
commissioning  
the services

# Involvement



Setting up a  
reference group  
of experts by  
experience

# Questions?

